

## RZUT KONSTRUKCJI DACHU

## ZESTAWIENIE STALI PŁATWI DACHOWYCH

	NR	PE2108J	1:100	FL1000 ( $\sigma = 1$ )	$F_{\text{P2108J}}(1_{\text{sig}})$	MA3	$F_{\text{P2108J}}(1_{\text{sig}})$	$\langle \text{SFR}_{\text{P2108J}} \rangle$
PF01	2.202674/46.642.3	23	750	0.20	5.90	125.17	545.05/14	
PF02	2.202674/46.642.3	24	750	0.20	5.90	125.17	545.05/14	
PF03	2.202674/46.642.3	25	400	0.20	6.20	54.54	27.64	
PF04	2.202674/46.642.3	1	676	0.20	6.20	54.54	27.64	
PF05	2.202674/46.642.3	1	876	0.20	6.20	7.18	7.18	
PF07	2.202674/46.642.3	1	3042	0.20	24.44	25.44	25.44	
PF08	2.202674/46.642.3	1	17473	0.20	18.44	18.44	18.44	
PF09	2.202674/46.642.3	1	820	0.20	29.62	29.62	29.62	
PF10	2.202674/46.642.3	1	4673	0.20	33.40	33.40	33.40	
PF11	2.202674/46.642.3	12	11379	0.20	9.34	11.80	9.34	
PF12	2.202674/46.642.3	12	3290	0.20	56.90	56.90	56.90	
PF13	2.202674/46.642.3	2	949	0.20	7.16	15.56	37.12	
PF14	2.202674/46.642.3	2	2501	0.20	4.86	34.72	34.72	
PF15	2.202674/46.642.3	2	2501	0.20	4.86	34.72	34.72	
PF16	2.202674/46.642.3	2	1568	0.20	6.20	4.86	4.86	
PF17	2.202674/46.642.3	2	3019	0.20	6.20	4.86	4.86	

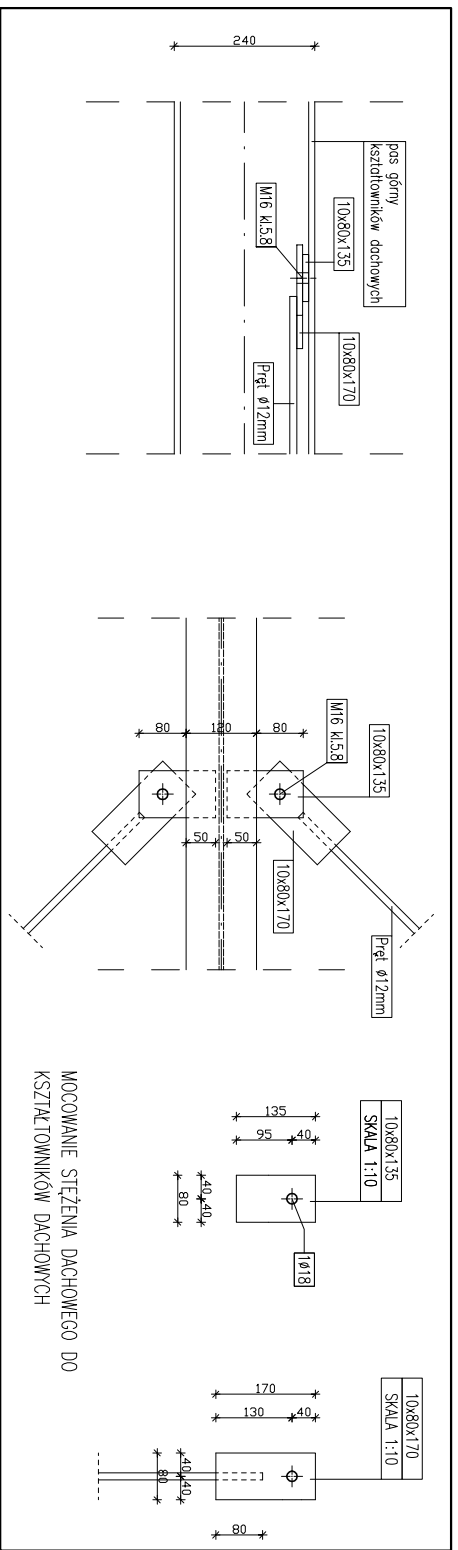
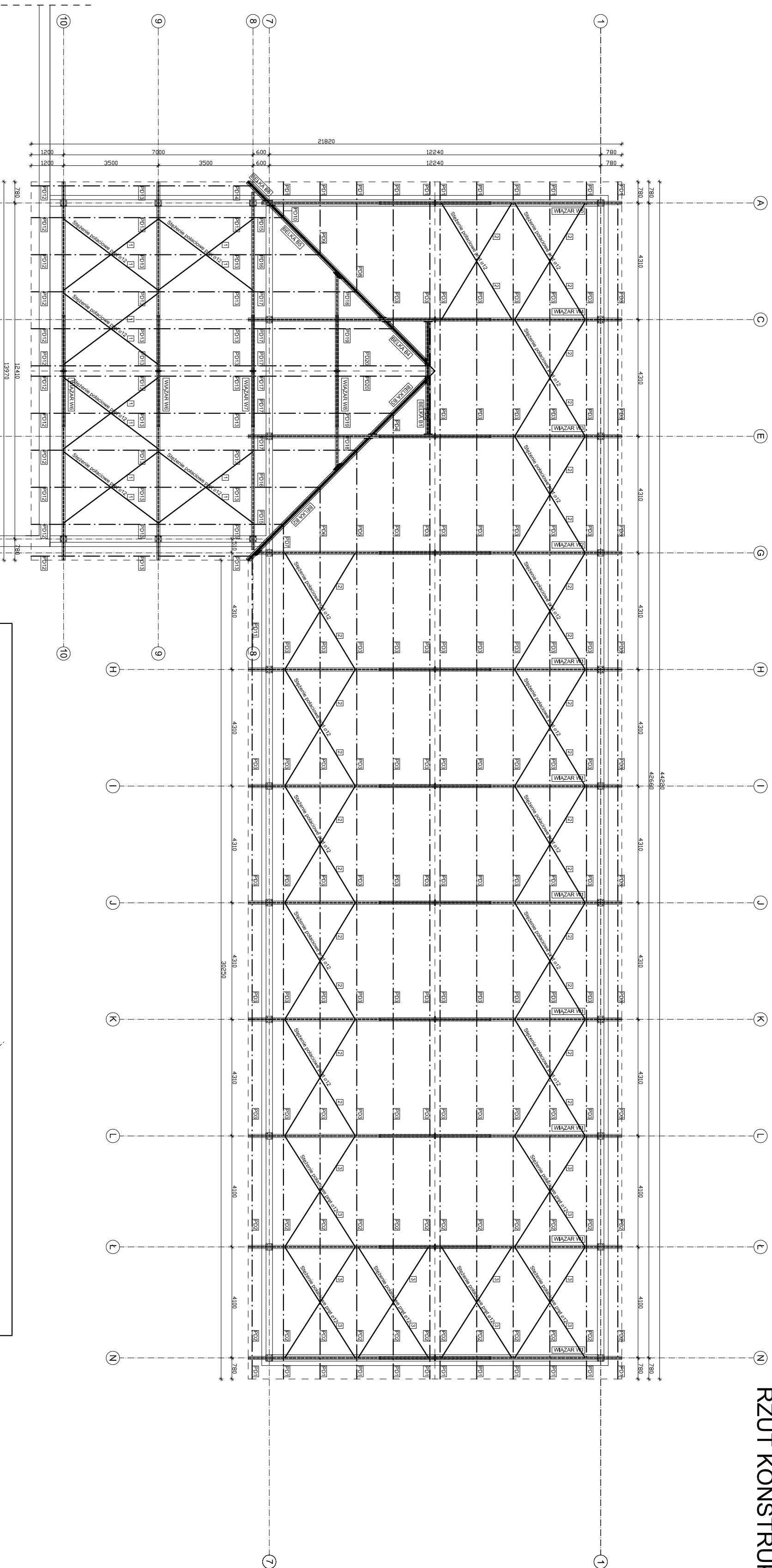
## ZESTAWIENIE STALI STĘŻEŃ POŁACIOWYCH

№	Репрезентатив	Литер.	Эксперт. [10]	МММА	
				Эксперт. [10]	Средн. ариф.
1	Репр. 1 - И.С.Сид. (Иркутск)	12	4002	0,90	4,82
2	Репр. 2 - И.С.Сид. (Иркутск)	29	4573	4,19	11,75
3	Репр. 3 - И.С.Сид. (Иркутск)	47	477	0,79	3,62
Итого:	1008х123	96	123	0,88	8,4
Итого:	1008х179	96	179	1,08	10,23
Итого:	1008х179			8,28	31,65

## ZESTAWIENIE STALI KONSTRUKCJI DACHOWEJ

NE	PROCESO	ILUSTR.	DESCRIPC. (m <sup>3</sup> )	ENTRADA (m <sup>3</sup> /seg)	PROCESO (m <sup>3</sup> /seg)	SALIDA (m <sup>3</sup> /seg)
p1	PRF 446	1	1001	30/70	32/67	32/67
p2	PRF 446	20	2501	30/66	32/67	105/67
p3	PRF 446	1	2501	30/70	32/67	105/67
p4	PRF 446	1	2956	30/70	30/75	96/75
p5	PRF 446	1	3719	30/70	116/43	166/43
p6	PRF 446	1	4142	30/70	164/45	164/45
p7	PRF 446	1	4518	30/70	185/18	185/18
p8	PRF 446	1	4518	30/70	185/18	185/18
p9	PRF 446	1	4666	30/70	203/77	203/77
p10	PRF 446	1	4666	30/70	203/77	203/77
p11	PRF 446	1	4814	30/70	209/19	209/19
p12	PRF 446	5	4814	30/70	209/18	495/50
p13	PRF 446	5	4814	30/70	209/18	495/50
p14	PRF 446	4	7123	30/70	518/68	874/70
p15	180/00/252	30	3232	30/70	313/7	94/11
p16	180/00/252	30	3232	30/70	313/7	94/11
p17	180/00/252	30	3232	30/70	313/7	94/11
p18	180/00/252	30	3232	30/70	313/7	94/11
p19	180/00/252	30	3232	30/70	313/7	94/11
p20	180/00/252	30	3232	30/70	313/7	94/11
p21	180/00/252	30	3232	30/70	313/7	94/11
p22	180/00/252	30	3232	30/70	313/7	94/11
p23	180/00/252	30	3232	30/70	313/7	94/11
p24	180/00/252	30	3232	30/70	313/7	94/11
p25	180/00/252	30	3232	30/70	313/7	94/11
p26	180/00/252	30	3232	30/70	313/7	94/11
p27	180/00/252	30	3232	30/70	313/7	94/11
p28	180/00/252	30	3232	30/70	313/7	94/11
p29	180/00/252	30	3232	30/70	313/7	94/11
p30	180/00/252	30	3232	30/70	313/7	94/11
p31	180/00/252	30	3232	30/70	313/7	94/11
p32	180/00/252	30	3232	30/70	313/7	94/11
p33	180/00/252	30	3232	30/70	313/7	94/11
p34	180/00/252	30	3232	30/70	313/7	94/11
p35	180/00/252	30	3232	30/70	313/7	94/11
p36	180/00/252	30	3232	30/70	313/7	94/11
p37	180/00/252	30	3232	30/70	313/7	94/11
p38	180/00/252	30	3232	30/70	313/7	94/11
p39	180/00/252	30	3232	30/70	313/7	94/11
p40	180/00/252	30	3232	30/70	313/7	94/11
p41	180/00/252	30	3232	30/70	313/7	94/11
p42	180/00/252	30	3232	30/70	313/7	94/11
p43	180/00/252	30	3232	30/70	313/7	94/11
p44	180/00/252	30	3232	30/70	313/7	94/11
p45	180/00/252	30	3232	30/70	313/7	94/11
p46	180/00/252	30	3232	30/70	313/7	94/11
p47	180/00/252	30	3232	30/70	313/7	94/11
p48	180/00/252	30	3232	30/70	313/7	94/11
p49	180/00/252	30	3232	30/70	313/7	94/11
p50	180/00/252	30	3232	30/70	313/7	94/11
p51	180/00/252	30	3232	30/70	313/7	94/11
p52	180/00/252	30	3232	30/70	313/7	94/11
p53	180/00/252	30	3232	30/70	313/7	94/11
p54	180/00/252	30	3232	30/70	313/7	94/11
p55	180/00/252	30	3232	30/70	313/7	94/11
p56	180/00/252	30	3232	30/70	313/7	94/11
p57	180/00/252	30	3232	30/70	313/7	94/11
p58	180/00/252	30	3232	30/70	313/7	94/11
p59	180/00/252	30	3232	30/70	313/7	94/11
p60	180/00/252	30	3232	30/70	313/7	94/11
p61	180/00/252	30	3232	30/70	313/7	94/11
p62	180/00/252	30	3232	30/70	313/7	94/11
p63	180/00/252	30	3232	30/70	313/7	94/11
p64	180/00/252	30	3232	30/70	313/7	94/11
p65	180/00/252	30	3232	30/70	313/7	94/11
p66	180/00/252	30	3232	30/70	313/7	94/11
p67	180/00/252	30	3232	30/70	313/7	94/11
p68	180/00/252	30	3232	30/70	313/7	94/11
p69	180/00/252	30	3232	30/70	313/7	94/11
p70	180/00/252	30	3232	30/70	313/7	94/11
p71	180/00/252	30	3232	30/70	313/7	94/11
p72	180/00/252	30	3232	30/70	313/7	94/11
p73	180/00/252	30	3232	30/70	313/7	94/11
p74	180/00/252	30	3232	30/70	313/7	94/11
p75	180/00/252	30	3232	30/70	313/7	94/11
p76	180/00/252	30	3232	30/70	313/7	94/11
p77	180/00/252	30	3232	30/70	313/7	94/11
p78	180/00/252	30	3232	30/70	313/7	94/11
p79	180/00/252	30	3232	30/70	313/7	94/11
p80	180/00/252	30	3232	30/70	313/7	94/11
p81	180/00/252	30	3232	30/70	313/7	94/11
p82	180/00/252	30	3232	30/70	313/7	94/11
p83	180/00/252	30	3232	30/70	313/7	94/11
p84	180/00/252	30	3232	30/70	313/7	94/11
p85	180/00/252	30	3232	30/70	313/7	94/11
p86	180/00/252	30	3232	30/70	313/7	94/11
p87	180/00/252	30	3232	30/70	313/7	94/11
p88	180/00/252	30	3232	30/70	313/7	94/11
p89	180/00/252	30	3232	30/70	313/7	94/11
p90	180/00/252	30	3232	30/70	313/7	94/11
p91	180/00/252	30	3232	30/70	313/7	94/11
p92	180/00/252	30	3232	30/70	313/7	94/11
p93	180/00/252	30	3232	30/70	313/7	94/11
p94	180/00/252	30	3232	30/70	313/7	94/11
p95	180/00/252	30	3232	30/70	313/7	94/11
p96	180/00/252	30	3232	30/70	313/7	94/11
p97	180/00/252	30	3232	30/70	313/7	94/11
p98	180/00/252	30	3232	30/70	313/7	94/11
p99	180/00/252	30	3232	30/70	313/7	94/11
p100	180/00/252	30	3232	30/70	313/7	94/11
p101	180/00/252	30	3232	30/70	313/7	94/11
p102	180/00/252	30	3232	30/70	313/7	94/11
p103	180/00/252	30	3232	30/70	313/7	94/11
p104	180/00/252	30	3232	30/70	313/7	94/11
p105	180/00/252	30	3232	30/70	313/7	94/11
p106	180/00/252	30	3232	30/70	313/7	94/11
p107	180/00/252	30	3232	30/70	313/7	94/11
p108	180/00/252	30	3232	30/70	313/7	94/11
p109	180/00/252	30	3232	30/70	313/7	94/11
p110	180/00/252	30	3232	30/70	313/7	94/11
p111	180/00/252	30	3232	30/70	313/7	94/11
p112	180/00/252	30	3232	30/70	313/7	94/11
p113	180/00/252	30	3232	30/70	313/7	94/11
p114	180/00/252	30	3232	30/70	313/7	94/11
p115	180/00/252	30	3232	30/70	313/7	94/11
p116	180/00/252	30	3232	30/70	313/7	94/11
p117	180/00/252	30	3232	30/70	313/7	94/11
p118	180/00/252	30	3232	30/70	313/7	94/11
p119	180/00/252	30	3232	30/70	313/7	94/11
p120	180/00/252	30	3232	30/70	313/7	94/11
p121	180/00/252	30	3232	30/70	313/7	94/11
p122	180/00/252	30	3232	30/70	313/7	94/11
p123	180/00/252	30	3232	30/70	313/7	94/11
p124	180/00/252	30	3232	30/70	313/7	94/11
p125	180/00/252	30	3232	30/70	313/7	94/11
p126	180/00/252	30	3232	30/70	313/7	94/11
p127	180/00/252	30	3232	30/70	313/7	94/11
p128	180/00/252	30	3232	30/70	313/7	94/11
p129	180/00/252	30	3232	30/70	313/7	94/11
p130	180/00/252	30	3232	30/70	313/7	94/11
p131	180/00/252	30	3232	30/70	313/7	94/11
p132	180/00/252	30	3232	30/70	313/7	94/11
p133	180/00/252	30	3232	30/70	313/7	94/11
p134	180/00/252	30	3232	30/70	313/7	94/11
p135	180/00/252	30	3232	30/70	313/7	94/11
p136	180/00/252	30	3232	30/70	313/7	94/11
p137	180/00/252	30	3232	30/70	313/7	94/11
p138	180/00/252	30	3232	30/70	313/7	94/11
p139	180/00/252	30	3232	30/70	313/7	94/11
p140	180/00/252	30	3232	30/70	313/7	94/11
p141	180/00/252	30	3232	30/70	313/7	94/11
p142	180/00/252	30	3232	30/70	313/7	94/11
p143	180/00/252	30	3232	30/70	313/7	94/11
p144	180/00/252	30	3232	30/70	313/7	94/11
p145	180/00/252	30	3232	30/70	313/7	94/11
p146	180/00/252	30	3232	30/70	313/7	94/11
p147	180/00/252	30	3232	30/70	313/7	94/11
p148	180/00/252	30	3232	30/70	313/7	94/11
p149	180/00/252	30	3232	30/70	313/7	94/11
p150	180/00/252	30	3232	30/70	313/7	94/11
p151	180/00/252	30	3232	30/70	313/7	94/11
p152	180/00/252	30	3232	30/70	313/7	94/11
p153	180/00/252	30	3232	30/70	313/7	94/11
p154	180/00/252	30	3232	30/70	313/7	94/11
p155	180/00/252	30	3232	30/70	313/7	94/11
p156	180/00/252	30	3232	30/70	313/7	94/11
p157	180/00/252	30	3232	30/70	313/7	94/11
p158	180/00/252	30	3232	30/70	313/7	94/11
p159	180/00/252	30	3232	30/70	313/7	94/11
p160	180/00/252	30	3232	30/70	313/7	94/11
p161	180/00/252	30	3232	30/70	313/7	94/11
p162	180/00/252	30	3232	30/70	313/7	94/11
p163	180/00/252	30	3232	30/70	313/7	94/11
p164	180/00/252	30	3232	30/70	313/7	94/11
p165	180/00/252	30	3232	30/70	313/7	94/11
p166	180/00/252	30	3232	30/70	313/7	94/11
p167	180/00/252	30	3232	30/70	313/7	94/11
p168	180/00/252	30	3232	30/70	313/7	94/11
p169	180/00/252	30	3232	30/70	313/7	94/11
p170	180/00/252	30	3232	30/70	313/7	94/11
p171	180/00/252					

## CZĘŚĆ ISTNIEJĄCA



## A.M. NIERUCHOMOŚCI

[illegible]